

NOTICE OF CONSTRUCTION

Lakeview Crescent Storm Outfall Rehabilitation

Dear Property Owners/Residents:

As part of the Lakeview Crescent Utilities and 99 Street Surface Rehabilitation Project, Thompson Infrastructure Ltd. and its subcontractors will be carrying out the second year of a two-year neighborhood renewal project in Lakeview Crescent within the hamlet of Lac La Biche. Construction will include the replacement of **water and sewer mains/services, storm infrastructure, concrete curb and sidewalk**, and the **paved roadways** throughout the work area. The work area affected by the 2020 construction schedule includes Phase 3, as shown in the Overall Phase Plan on Page 2 of this notice.

Timeline: Monday, May 25 to August 2020
Scope of Work: Water and sewer replacement, roadway construction
Hours of Work: 7 a.m. to 7 p.m. (Monday – Saturday), 9 a.m. to 7 p.m. (Sunday)

Impact to Residents and Local Traffic:

- Noise and presence of construction equipment/traffic
- Parking and vehicle access restrictions within Phase 3. Residents of Phase 3 will have to find parking on the street in Phase 1 or 2 during construction, but will have foot access to their houses at all times. The back lanes within Lakeview Crescent may also be used for Phase 3 access. Special temporary accommodations will be made for residents with mobility issues. Construction representatives from V3 and Thompson will communicate directly with each resident in Phase 3 during construction to keep them up to date.

Road closures and work areas will be staged to minimize the impact on the community. Every effort will be made to maintain access to driveways. However, construction will impact access to private property, and we encourage residents to prepare as much as possible. Consider relocating trailers and scheduling any major deliveries prior to construction. Please feel free to contact us to discuss specific access concerns.

- Temporary water service connections will be installed to residences within Phase 3. Temporary water service connections will be completed via a hook up to your outside water tap connection. We will need to gain access to your internal water meter to complete the hook up. Our crews will go door-to-door to coordinate this connection with each lot owner. There is also the potential for short-term (8 hours or less) water shut-offs during construction. Additional notices will be handed out to affected residents/businesses 24 hours prior to any water interruption.
- Temporary water work will begin around **May 25, 2020** and excavation and road closures will start around **June 8, 2020** with an overall project completion in **August 2020**.
- Waste and recycling collection services will not have access to the construction area in Phase 3. We ask that you leave your bins in their usual locations. Crews will move them to an accessible point and return them following collection.

Contractor Contact:

Garth Gallant, NCSO, Site Superintendent
Thompson Infrastructure Ltd.
587-785-9945

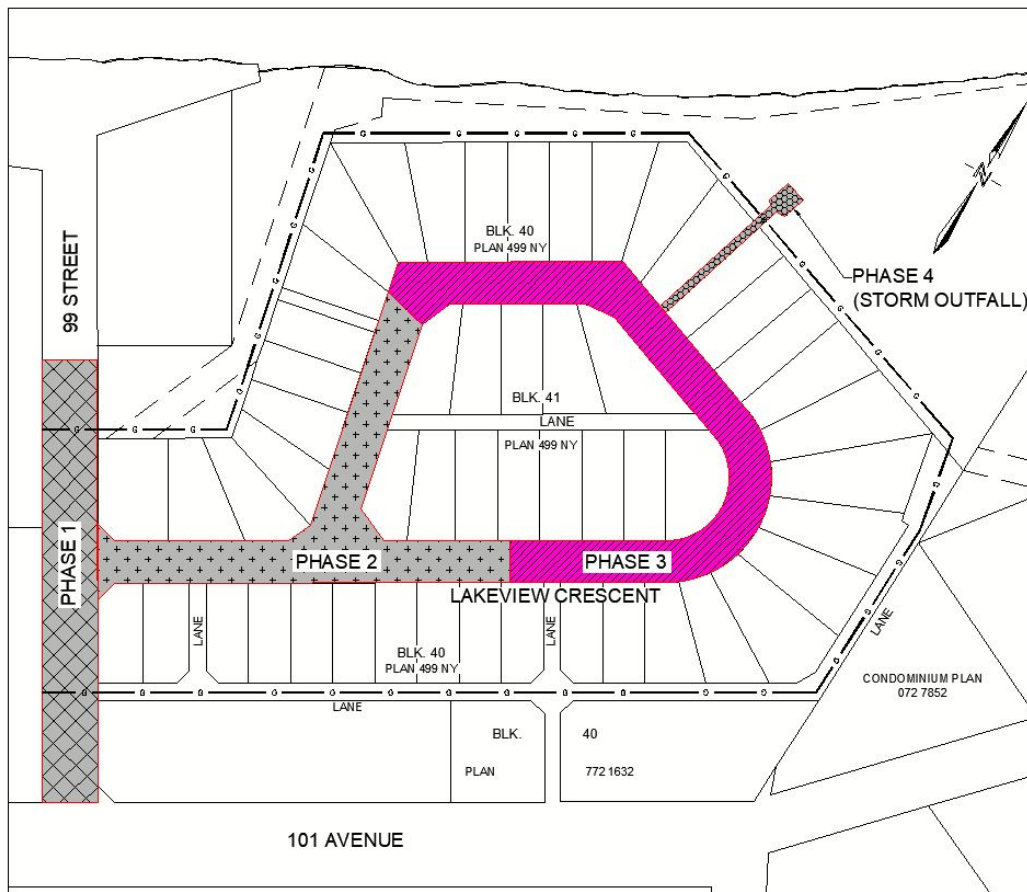
Consultant Contact:

Steven Reichert, P.Eng., Director – Engineering Group
V3 Companies of Canada Ltd.
780-915-7918

County Contacts:

Dylan Maskalyk, Engineering Technologist, Engineering Services
Lac La Biche County
780-623-0248

Ali Memon, P.Eng., Manager, Engineering Services
Lac La Biche County
780-404-6869



OVERALL PHASE PLAN
NTS

LEGEND:

- | | | |
|------------------|---|---|
| Civil - Phase 1 |  | Completed in 2019. |
| Civil - Phase 2 |  | Completed in 2019. Top lift of asphalt scheduled for summer 2020. |
| Civil - Phase 3 |  | (May 2020 - August 2020) |
| Civil - Phase 4 |  | Completed in March 2020. |
| Gas - All Phases |  | Completed in 2019. |