

**BYLAW 20-018
OF
LAC LA BICHE COUNTY**

A BYLAW OF LAC LA BICHE COUNTY IN THE PROVINCE OF ALBERTA TO AMEND BYLAW 13-020, AS AMENDED, BEING THE MUNICIPAL DEVELOPMENT PLAN OF LAC LA BICHE COUNTY.

WHEREAS Council adopted Bylaw 13-020 to be used as the Lac La Biche County Municipal Development Plan; and

WHEREAS it is deemed expedient to amend Bylaw 13-020, as amended, as set out in Section 692 of the *Municipal Government Act*, R.S.A. 2000, Chapter M 26, as amended;

NOW THEREFORE under the authority and subject to the provisions of the *Municipal Government Act*, and by virtue of all other powers enabling it, the Council of Lac La Biche County, duly assembled, enacts as follows:

Bylaw 13-020 Amendments

1 That Bylaw 13-020, as amended, being the Municipal Development Plan is amended as follows:

- (a) Map 6A, Future Predominant Land Use Lac La Biche Area Detail, be amended such that part of SE-36-66-14-W4M containing 2.43 Ha (6.0 acres) in size more or less, be redesignated from Agricultural to Residential as shown on Schedule 'A' of this Bylaw.

Severability

2 Each provision of this Bylaw is independent of all other provisions. If any such provision is declared invalid by a court of competent jurisdiction, all other provisions of this Bylaw will remain valid and enforceable.

Effective Date

3 This bylaw shall come into effect upon passing of the third reading.

THAT BYLAW 20-018 BE GIVEN FIRST READING THIS 2nd DAY OF JUNE, 2020.

"Original Signed" _____
Mayor

"Original Signed" _____
Chief Administrative Office

THAT BYLAW 20-018 BE GIVEN SECOND READING THIS _____ DAY OF _____, 20____.

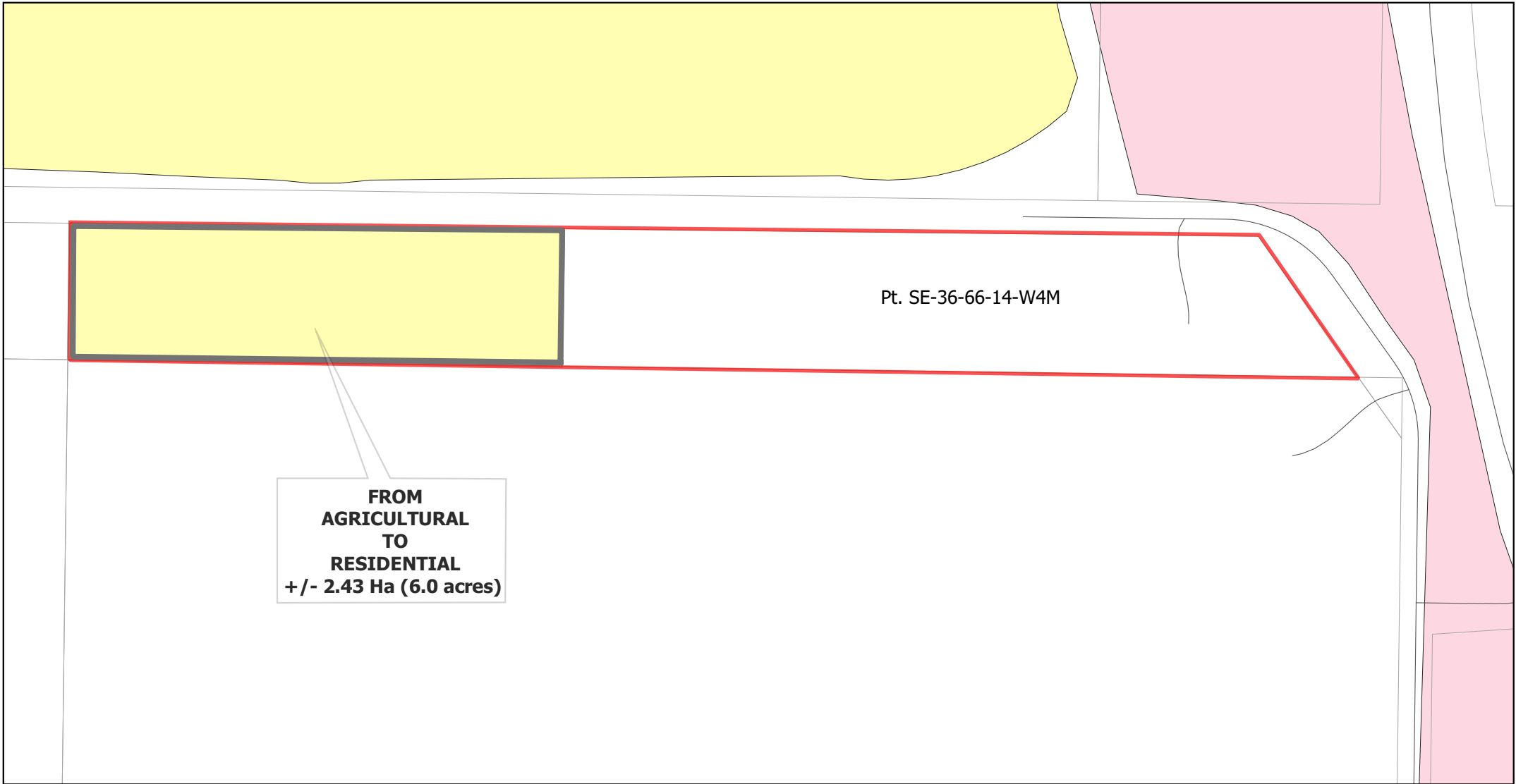
THAT BYLAW 20-018 BE GIVEN THIRD READING THIS _____ DAY OF _____, 20____.

Mayor

Chief Administrative Officer

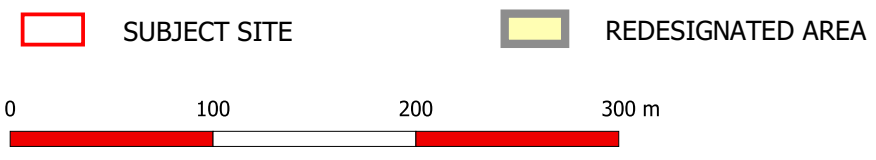
SCHEDULE 'A'- MDP AMENDMENT

BYLAW NO 20-018
Pt. SE-36-66-14-W4M



**FROM
AGRICULTURAL
TO
RESIDENTIAL
+/- 2.43 Ha (6.0 acres)**

Pt. SE-36-66-14-W4M



Map Produced: May 26, 2020 Projection: UTM12 NAD83

Lac La Biche County makes no representation or warranties regarding the information contained in this document, including, without limitation, whether said information is accurate or complete. Persons using this document do so solely at their own risk, and Lac La Biche County shall have no liability to such persons for any loss or damage whatsoever. This document shall not be copied or distributed to any person without the express written consent of Lac La Biche County.

Base Map compiled from the Provincial Title Mapping Digital Base.
Spatial Data Warehouse Ltd., November 2017. © 2018 Lac La Biche County. All Rights Reserved.