

**BYLAW 17-014
OF
LAC LA BICHE COUNTY**

BEING A BYLAW OF LAC LA BICHE COUNTY IN THE PROVINCE OF ALBERTA, TO AMEND BYLAW 12-024, BEING THE LAND USE BYLAW OF THE LAC LA BICHE COUNTY.

WHEREAS Council has adopted the Lac La Biche County Bylaw 12-024 to be used as the Lac La Biche County Land Use Bylaw; and

WHEREAS IT IS DEEMED EXPEDIENT TO AMEND Bylaw 12-024 as set out in Section 692 of the Municipal Government Act, S.A. 2000, Chapter M-26, as amended.

NOW THEREFORE under the authority and subject to the provisions of the Municipal Government Act, and by virtue of all other powers enabling it, the Council of Lac La Biche County hereby assembled enacts as follows:

1. Schedule "B" of Land Use Bylaw 12-024 be amended such that Pt. of NE-24-65-14-W4M containing +/-4.04 Ha (10.0 acres) in size more or less, as shown on Schedule 'A' be rezoned from Agricultural District (AG) to On-Site Estate Residential District 2 (OE2).

2. This Bylaw shall come into effect upon passing of third reading.

MOTION BY COUNCILLOR THOMPSON THAT BYLAW 17-014 BE GIVEN FIRST READING THIS 8TH DAY OF AUGUST, 2017.

"Original Signed"

Mayor

"Original Signed"

Chief Administrative Officer

MOTION BY COUNCILLOR NOWAK THAT BYLAW 17-014 BE GIVEN SECOND READING THIS 12th DAY OF SEPTEMBER, 2017.

MOTION BY COUNCILLOR RICHARD THAT BYLAW 17-014 BE GIVEN THIRD READING THIS 12th DAY OF SEPTEMBER, 2017.

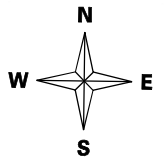
"Original Signed"

Mayor

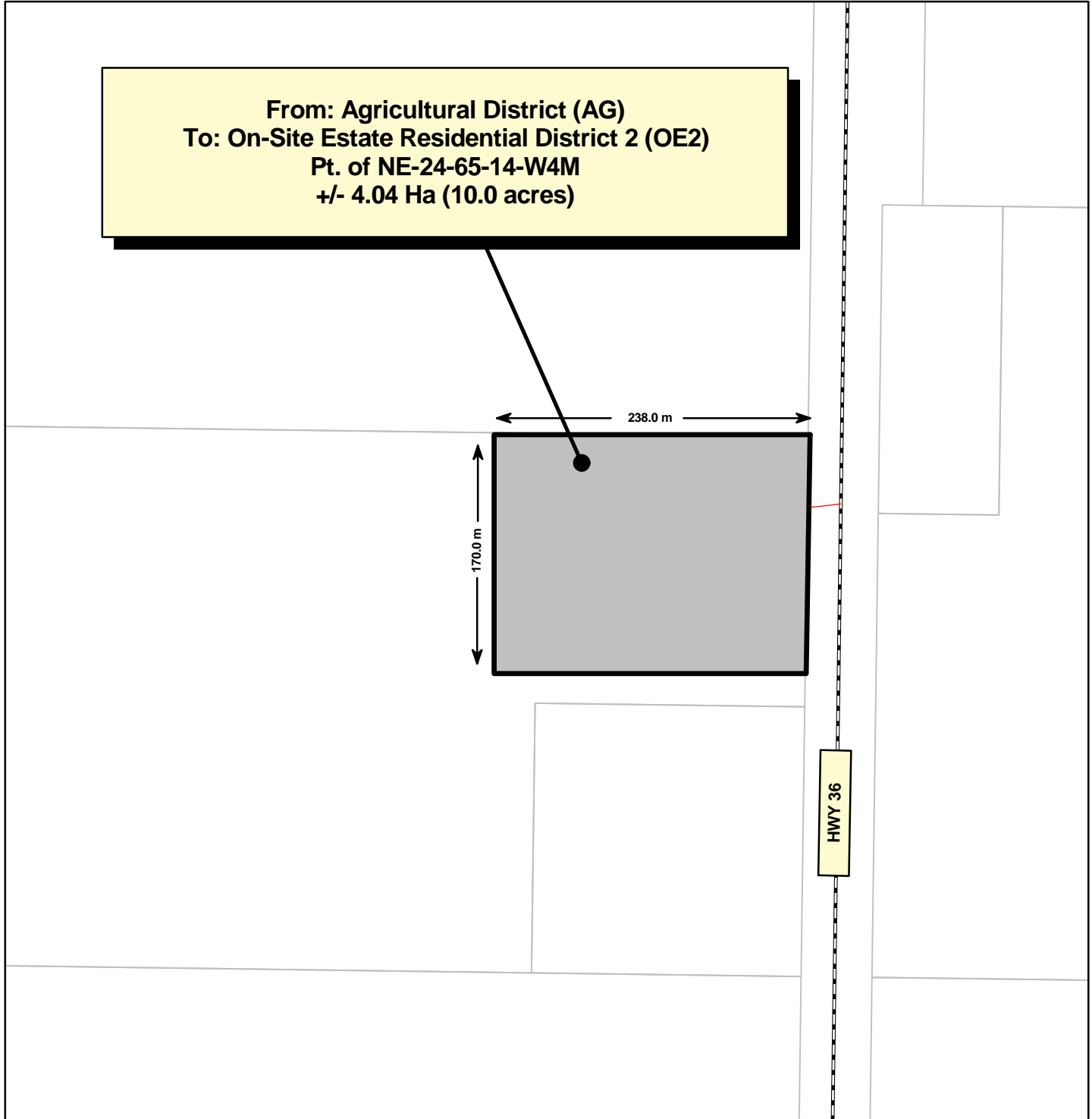
"Original Signed"

Chief Administrative Officer

SCHEDULE A Bylaw No. 17-014



**From: Agricultural District (AG)
To: On-Site Estate Residential District 2 (OE2)
Pt. of NE-24-65-14-W4M
+/- 4.04 Ha (10.0 acres)**



Scale 1:4275

	Hamlet Boundary		Gravel Road
	Cadastre		Oiled Road
	Hydro Line		Paved Road
	Waterbody		Paved Highway
			Gravel Highway



Map Produced: July 31, 2017 Projection: UTM12 NAD83

Lac La Biche County makes no representation or warranties regarding the information contained in this document, including, without limitation, whether said information is accurate or complete. Persons using this document do so solely at their own risk, and Lac La Biche County shall have no liability to such persons for any loss or damage whatsoever.

This document shall not be copied or distributed to any person without the express written consent of Lac La Biche County

Base Map compiled from the Provincial Title Mapping Digital Base.
Spatial Data Warehouse Ltd., March, 2017

© 2017 Lac La Biche County. All Rights Reserved.