

**BYLAW 19-002  
OF  
LAC LA BICHE COUNTY**

---

BEING A BYLAW OF LAC LA BICHE COUNTY IN THE PROVINCE OF ALBERTA, TO AMEND BYLAW 17-004, BEING THE LAND USE BYLAW OF THE LAC LA BICHE COUNTY.

---

**WHEREAS** Council has adopted the Lac La Biche County Bylaw 17-004 to be used as the Lac La Biche County Land Use Bylaw; and

**WHEREAS** IT IS DEEMED EXPEDIENT TO AMEND Bylaw 17-004 as set out in Section 692 of the Municipal Government Act, S.A. 2000, Chapter M-26, as amended.

**NOW THEREFORE** under the authority and subject to the provisions of the Municipal Government Act, and by virtue of all other powers enabling it, the Council of Lac La Biche County hereby assembled enacts as follows:

1. Schedule "A" of Land Use Bylaw 17-004 be amended such Lot 1, Plan 0120166 containing +/- 0.81 Ha (2.0 acres) in size more or less, as shown on attached Schedule 'A' be rezoned from Agricultural District (AG) to Public/Institutional District (PI).
2. This Bylaw shall come into effect upon passing of third reading.

**MOTION BY COUNCILLOR JOHNSON THAT BYLAW 19-002 BE GIVEN FIRST READING THIS 8<sup>th</sup> DAY OF JANUARY, 2019.**

"Original Signed"

Mayor

"Original Signed"

Chief Administrative Officer

**MOTION BY COUNCILLOR L'HEURJEX THAT BYLAW 19-002 BE GIVEN SECOND READING THIS 5<sup>th</sup> DAY OF FEBRUARY, 2019.**

**MOTION BY COUNCILLOR BENIUK THAT BYLAW 19-002 BE GIVEN THIRD READING THIS 5<sup>th</sup> DAY OF FEBRUARY, 2019.**

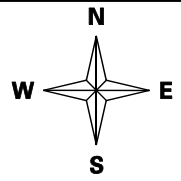
"Original Signed"

Mayor

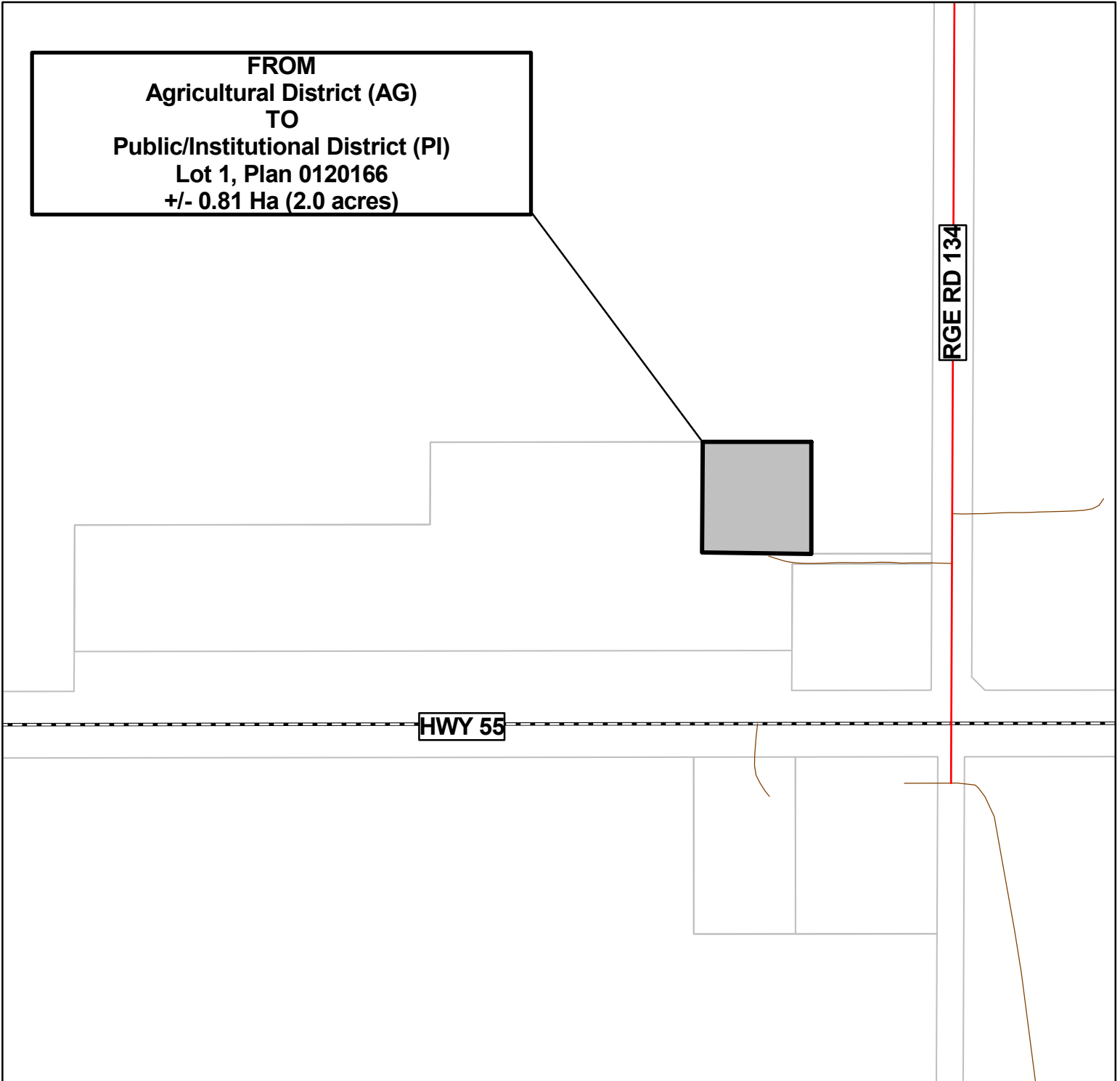
"Original Signed"

Chief Administrative Officer

# SCHEDULE A Bylaw No. 19-002



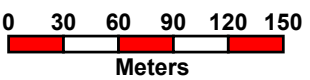
**FROM  
Agricultural District (AG)  
TO  
Public/Institutional District (PI)  
Lot 1, Plan 0120166  
+/- 0.81 Ha (2.0 acres)**



**RGE RD 134**

**HWY 55**

	Subject Property		Gravel Road
	Cadastre		Oiled Road
	Hydro Line		Paved Road
	Waterbody		Paved Highway
			Gravel Highway



**Map Produced: December 19, 2018**      **Projection: UTM12 NAD83**

Lac La Biche County makes no representation or warranties regarding the information contained in this document, including, without limitation, whether said information is accurate or complete. Persons using this document do so solely at their own risk, and Lac La Biche County shall have no liability to such persons for any loss or damage whatsoever.

This document shall not be copied or distributed to any person without the express written consent of Lac La Biche County

Base Map compiled from the Provincial Title Mapping Digital Base. Spatial Data Warehouse Ltd., January 28, 2016

© 2015 Lac La Biche County. All Rights Reserved.